

Case Study Report



Project Identification

Customer: Lagasse Sweet
Location: Plainfield, Indiana

Design Specifications

Facility Warehouse 78,000' x 36' High
Winter Operation 70° – 0°

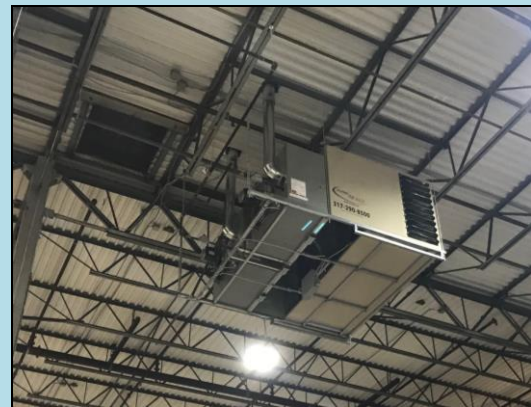
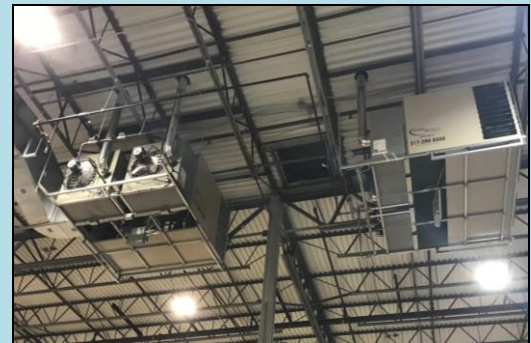


Project Challenge:

Lagasse Sweet moved into an existing warehouse space in Plainfield, IN that was being heated by (1) Cambridge S2200 100% Outside Air MAU. The Cambridge unit was unable to maintain desired temperature which caused high stratification rate and resulted in large utility bills. Lagasse Sweet wanted an HVAC system that could efficiently heat and ventilate their new space.

Equipment Solution:

Air Energy provided (2) ER-242-800s + (1) 20" x 30" Intake Hood to meet ASHRAE 62.1. The Rack Units not only increased the buildings temperature at a lower utility cost, but The Racks were also able to provide 1.5 Air Turnovers for summer ventilation. ***By replacing the Cambridge S2200 with Rack Units, Lagasse Sweet reduced utility costs by \$.28/sqft.***



Financial Impact of Rack System:

Lagasse Sweet Experienced Annual Savings totaling **\$21,629**:

- Electrical – 29,400 kWh at \$.10/kWh
- Natural Gas – 18,689 therms at \$1.00/therm

Lagasse Sweet received verified Vectren Rebate:

- Vectren – Natural Gas: **\$18,689**